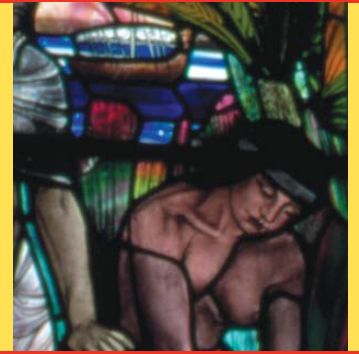


find
ME!



Childrens Guide

Welcome to the Church of St James and St Basil which was built in 1931

Can you find these shapes anywhere in the church?

The shell is a cockle shell and it is the emblem of St James. His shrine in Spain was a popular centre for medieval pilgrimage, when the pilgrims wore a badge in the shape of a shell in their hats.



The dove is the emblem of St Basil who was an important Bishop. He wrote a book about the Holy Spirit and the Holy Spirit is often drawn as a dove.

The church has many other beautiful stained glass windows

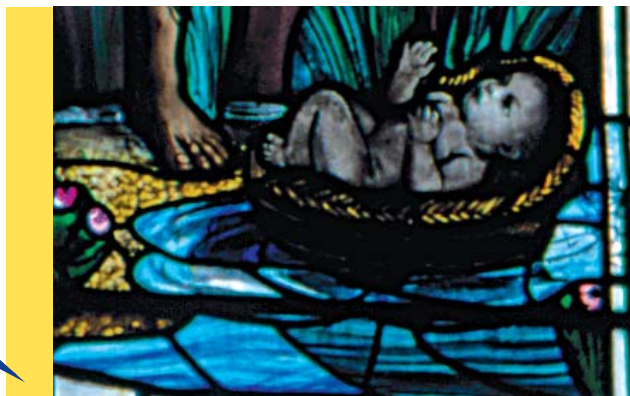
Can you find the window which shows all the creatures from the sea? Which is your favourite fish?



Which window shows this fierce lion?



One of the windows shows a picture of Moses in the rushes as a baby. Can you spot it?



Somewhere on a church wall is this mark, Why don't you see if you can find it?!



It was made when the Bishop made the church a sacred place and it's called the consecration mark.

Can you find the stained glass window which shows two soldiers?



These are two of the sons of Sir James Knott, a local business man. They were killed in World War One and Sir James gave the money for this church to be built in their memory.

Newcastle
City Council

NEWCASTLE COMMUNITY HERITAGE PROJECT
The Newcastle Community Heritage Project creates opportunities for celebrating cultural heritage and community history. By working with community groups the Project aims to support local initiatives and to widen access to the heritage of Newcastle.
Down your way?

Supported by
The National Lottery
through the Heritage Lottery Fund

Heritage Lottery Fund